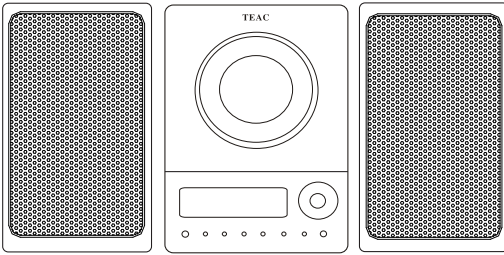


# TEAC



## SERVICE MANUAL

# CD-X10i

## MICRO Hi-Fi SYSTEM



### NOTES

- PC board shown are viewed from parts side.
- The parts with no reference number or no parts number in the exploded views are not supplied.
- As regards the resistors and capacitors, refer to the circuit diagrams contained in this manual.
- ⚠ Parts marked with this sign are safety critical components. they must be replaced with identical components - refer to the appropriate parts list and ensure exact replacement.
- Parts of [ ] mark can be used only with the version designated.

### CONTENTS

<b>1 SAFETY INFORMATION</b>	2
<b>2 SPECIFICATIONS</b>	3
<b>3 ADJUSTMENT AND CHECKS</b>	4
<b>4 EXPLODED VIEW AND PARTS LIST</b>	6
<b>5 PC BOARDS AND PARTS LISTS</b>	10
<b>6 WIRING DIAGRAM</b>	18
<b>7 INCLUDED ACCESSORIES</b>	20

# CD-X10i

## 1 SAFETY INFORMATION

### SAFETY INFORMATION

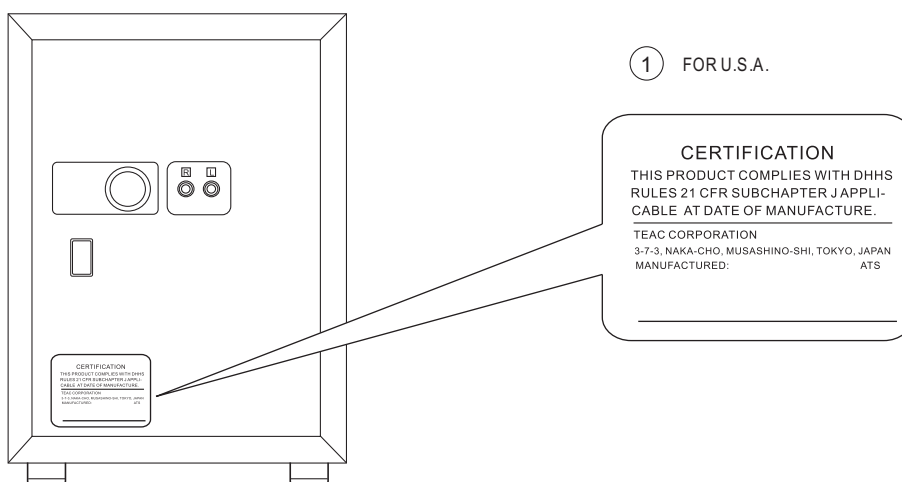
This product has been designed and manufactured according to FDA regulations " title 21, CFR, chapter 1, subchapter J, based on The Radiation Control for Health and Safety Act of 1968" and is classified as class 1 laser product. There is not hazardous invisible laser radiation during operation because invisible laser radiation emitted inside of this product is completely confined in the protective housings. The label required in this regulation is shown ①.

#### • CAUTION

USE OF CONTROLS OR ADJUSTMENT OR PERFORMANCE OF PROCEDURES OTHER THAN THOSE SPECIFIED HEREIN MAY RESULT IN HAZARDOUS RADIATION EXPOSURE.

DO NOT REMOVE THE PROTECTIVE HOUSING USING SCREWDRIVER.

IF THIS PRODUCT DEVELOPS TROUBLE, MAKE A CONTACT WITH OUR SERVICEMAN, AND DO NOT USE THE PRODUCT A TROUBLED STATE.



#### Optical pickup:

Type : SF-P200Z

Manufacturer : SANYO Electric-Co., Ltd

Laser output : Less than 0.5 mW on the objective lens

Wavelength : 765 - 815 nm

## 2 SPECIFICATIONS

### Amplifier Section

Output Power (L+R)	5W + 5W
Output Power (Subwoofer)	15 W
Input Sensitivity	300mV
Frequency Response	50 to 20,000 Hz

### Tuner Section (FM)

Frequency Range	87.5 MHz to 108.0 MHz
Sensitivity (S/N30dB)	20 dBuV/m

### Tuner Section (AM)

Frequency Range	520 to 1710 kHz
Sensitivity (S/N20dB)	54 dBuV/m

### CD Player Section

Frequency Responce	20 to 20,000 Hz (+/-1dB)
Signa-to-Noise Ratio	55 dB
Wow and Flutter	Unmeasurable

### SPEAKER SYSTEM Section

L & R speaker	
Type	Full range flat type
Impedance	4 ohms
Subwoofer Impedance	8 ohms

### GENERAL

Power Requirements	120V AC,60Hz
Power Consumption	80 W
Dimension (W x H x D ): Main Unit	160 x 226 x 86 mm
L & R Speaker	142 x 226 x 70mm
Subwoofer	160 x 245 x 335mm
Dock (without cable)	80 x 28 x 67mm
Weight: (net)	
Main Unit	1.0 kg
L & R Speaker	0.6 kg(each)
Subwoofer	5.3 kg
Dock	0.2 kg

### Standard Accessories:

Remote Control Unit (RC-1090)	x 1
Battery for Remote Control Unit	x 1
Dock	x 1
Dock adaptor	x 8
(adaptor "60GB (color) + Phone 40GB/60GB" premounted)	
Cover for the Dock	x 1
Subwoofer Cable	x 1
Speaker Cable	x 2
FM Antenna	x 1
AM Antenna	x 1
Wall Mount Adaptor	x 3
Wall Mount screw	x 10
Tapered Plastic Wall Anchor	x 10
Template for Wall Mounting	x 1
Stereo mini plug cable	x 1
Owner's Manual	x 1
Quick Guide for Connection	x 1
Warranty Card	x 1

- Design and specifications are subject to change without notice.
- Illustrations may differ slightly from production models.
- Weight and dimensions are approximate.

# CD-X10i

## 3 ADJUSTMENTS AND CHECKS

### 3-1 TUNER SECTION

- Use a screwdriver with a plastic or ceramic grip for all adjustment.

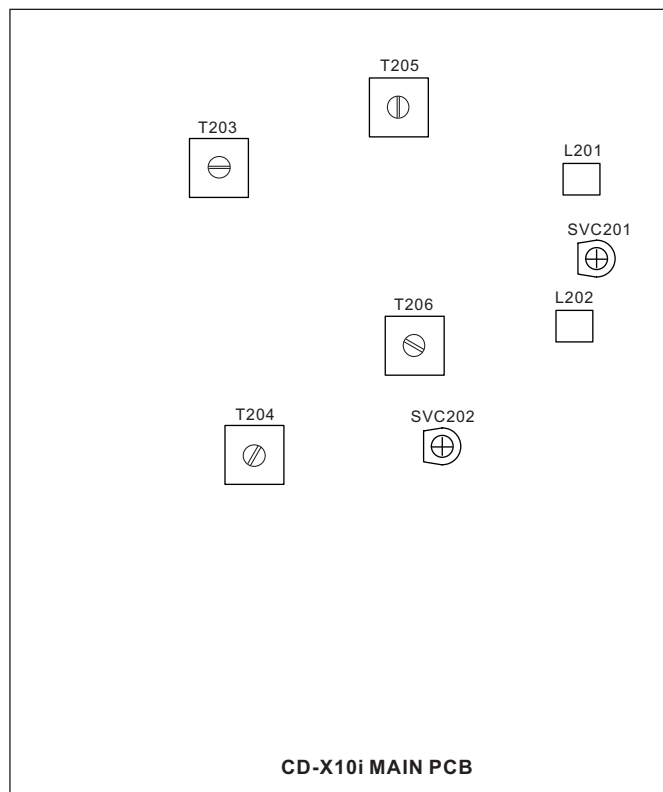
#### 3-1-1 FM adjustment

1. Set the function switch to the FM position.
2. Connect the signal generator output through a 75 ohm dummy antenna to "ANT" on MAIN PCB.
3. Connect the oscilloscope to the speaker terminal.
4. Set the signal generator as listed in the alignment chart.

#### 3-1-2 AM adjustment

1. Set the function switch to the AM position.
2. Connect the test loop antenna across the output of the signal generator.
3. Connect the oscilloscope to the speaker terminal.
4. Set the signal generator as listed in the alignment chart.

### 3-2 Adjustment and Test Points



## 3-2-1 FM/AM alignment chart

ITEM	SG SETTING	TUNER SETTING	ADJUSTMENT POINT	ADJUSTMENT
<b>FM</b>				
<b>1.IFT adjustment</b>	10.7 MHz 1kHz, +/-22.5kHz dev.	108MHz	T205	With 10.7 MHz at zero crossover
<b>2. FM band</b>	87.5MHz 1kHz, +/-22.5kHz dev.	87.5MHz	L202	Adjust for max. output and best waveform.
<b>3. Tracking</b>	90MHz 1kHz, +/-22.5kHz dev.	90MHz	L201	
	106MHz 1kHz, +/-22.5kHz dev.	106MHz	SVC201	
	Repeat step 3			
<b>AM</b>				
<b>1. IF adjustment</b>	450kHz 1kHz, 30% mod	1710kHz	T203	Center for max. output.
<b>2. AM band</b>	520kHz 1kHz, 30% mod	520kHz	T206	Adjust for max. output and best waveform.
<b>3. Tracking</b>	600kHz 1kHz, 30% mod	600kHz	T204	
	1400kHz 1kHz, 30% mod	1400kHz	SVC202	
	Repeat step 3			

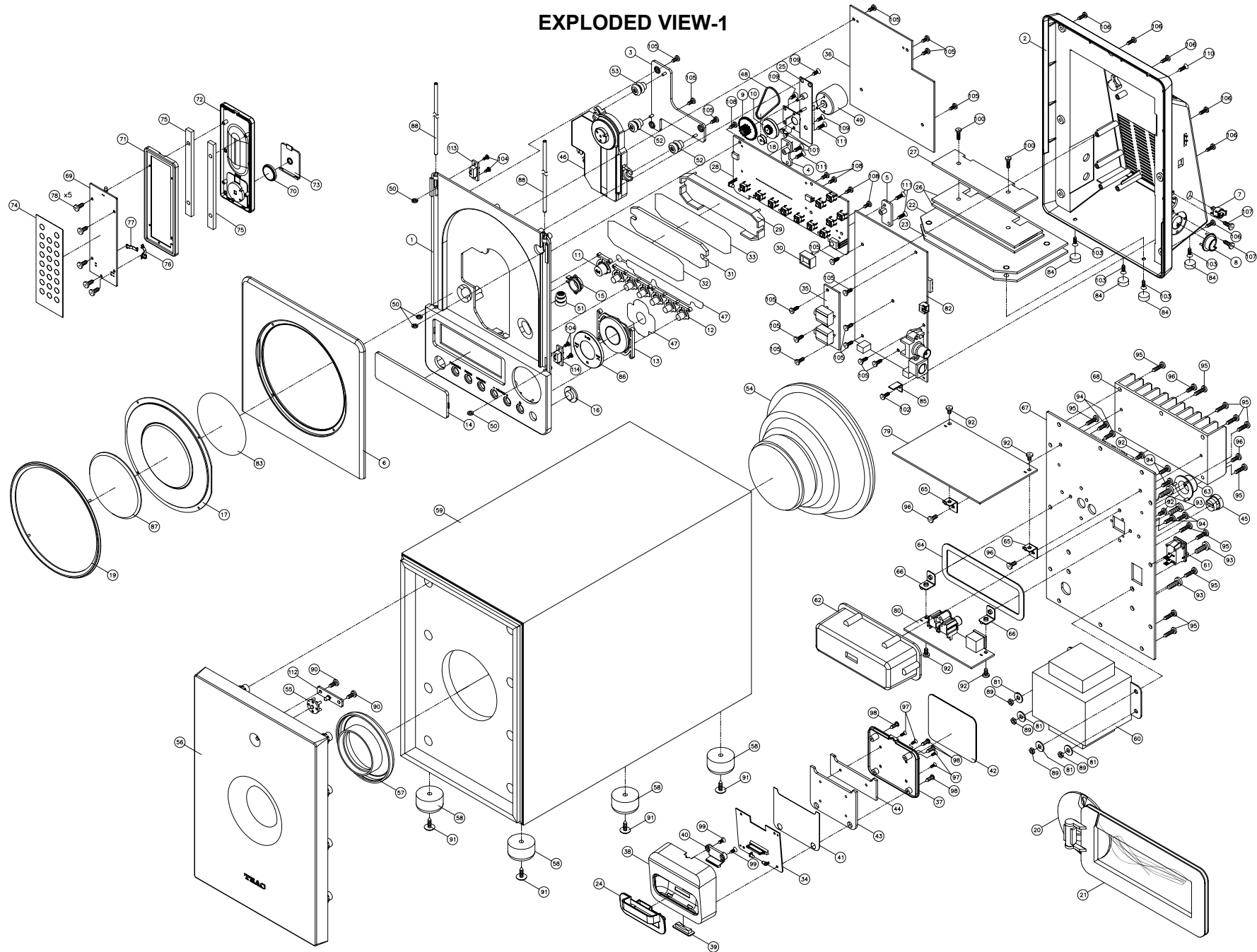
## 3-3 CD SECTION

Auto alignment.

# CD-X10i

## 4. EXPLODED VIEWS AND PARTS LIST

### EXPLODED VIEW-1




## EXPLODED VIEW-1

REF. NO	PARTS NO.	DESCRIPTION	REMARKS
1-1	56-04CD10I0B010	FRONT CABINET	
1-2	56-05DX0151B010	REAR CABINET	
1-3	56-07CD10I09000	CD BRACKET	
1-4	56-07CD10I3B000	CONNECT POST-1	
1-5	56-07CD10I4B000	CONNECT POST-2	
1-6	56-14CD10I0B010	CD DOOR	
1-7	56-20CD10I0B000	AC CORD BUSHING	
1-8	56-22CD10I0B000	PROTECT COVER	
1-9	56-24DX01500000	CD DOOR GEAR	
1-10	56-24DX01510000	STRAP GEAR	
1-11	56-53CD10I0A010	POWER KNOB	
1-12	56-53CD10I1A010	FUNCTION KNOB GROUP-6KEY	
1-13	56-53CD10I2B000	CD KNOB	
1-14	56-57CD10I00010	DISPLAY LENS	
1-15	56-57CD10I29000	POWER KNOB LENS	
1-16	56-57CD10I32000	REMOTER LENS	
1-17	56-57DX015I0000	CD DOOR LENS	
1-18	56-760000000020	DOOR MOTOR PULLY	
1-19	56-78DX0151G000	CD DOOR CHROME RING	
1-20	56-07X20000B000	AM ANT STAND	
1-21	56-27X20000B000	AM ANT HOLDER	
1-22	61-11DX01500021	FERRUM PLATE (SCREW HOLE)	
1-23	61-11DX01500121	FERRUM PLATE (HOLE)	
1-24	56-07SRLXIAB000	INSERT 6 VIDEO 60GB	
1-25	61-11DX01500321	MOTOR BRACKET	
1-26	61-11DX01500420	FERRUM PLATE - C	
1-27	61-11DX01500520	FERRUM PLATE - D	
1-28	05-05CD10I00000	KEY/DISPLAY PCB ASSY	
1-29	56-07CD10I19000	BACKLIGHT BRACKET	
1-30	56-07CD10I2B000	REMOTER BRACKET	
1-31	56-57CD10I10000	BACKLIGHT LENS	
1-32	57-08CD10I00020	DISPLAY FILTER SHEET - 99x26.5x0.2MM	
1-33	57-26CD10I00020	DISPLAY FILTER SHEET - 99x26.5x0.1MM	
1-34	05-08CD10I00001	IPOD PCB ASSY	
1-35	05-09CD10I00000	HP/AUX JACK PCB ASSY	
1-36	05-30CD10I00000	CD PCB ASSY	
1-37	56-03CD10I0B000	IPOD HOLDER BOTTOM	
1-38	56-04CD10I1B000	IPOD FRONT	
1-39	56-57CD10I4B000	IPOD LENS	
1-40	56-64CD10I0B000	IPOD LOCK	
1-41	57-08CD10I00120	PVC SHEET - 71x53x0.5MM	
1-42	58-26CD10I00020	RUBBER FOOT - 73.6x60x1.3MM	
1-43	61-11CD10I00120	FERRUM PLATE - A	
1-44	61-11CD10I00220	FERRUM PLATE - B	
1-45	43-500000002020	AC CORD BUSHING	

# CD-X10i

## EXPLODED VIEW-1

REF. NO	PARTS NO.	DESCRIPTION	REMARKS
1-46	20-70DA23Z10000	CD MECHANISM	
1-47	57-08CD10I00220	PVC SHEET	
1-48	58-43DX01500020	DRIVE BELT	
1-49	58-44CD10I00020	DC MOTOR DC 5V	
1-50	58-58DX01500420	RUBBER RING	
1-51	58-61EX0M108120	SHOCK ABSORBER (GREY)	
1-52	58-61MC23500020	SHOCK ABSORBER (GREY)	
1-53	58-61MC23500120	SHOCK ABSORBER (BLACK)	
1-54	19-021153300120	SPEAKER 8 OHM 30W	
1-55	56-57CDX0936000	LIGHT LENS	
1-56	56-85CD10I0B010	SUBWOOFER PANEL	
1-57	56-87CDX090B000	PLASTIC TUBE	
1-58	58-263253150020	RUBBER FOOT DIA 25MM	
1-59	58-73DX01500121	SUBWOOFER BOX	
1-60	 18-203DX0150120	H/TRANSFORMER EI66 AC120V	
1-61	41-172111000310	SWITCH	
1-62	56-22DX0150B000	PCB COVER	
1-63	56-78CD10I0B000	SAFEGUARD RING/SUB	
1-64	58-58DX01500320	CUSHION - 106x40x1MM	
1-65	61-11V600000020	PCB BRACKET	
1-66	61-11V820010020	PCB FIX BRACKET - B	
1-67	61-33CD10I00020	SUB. REAR PANEL #CD-X10I	
1-68	61-48DX01500020	HEATSINK - A	
1-69	05-13CD10I00000	REMOTE PCB ASSY	
1-70	51-021301000080	LITHIUM BATTERY	
1-71	56-43DX0150B010	REMOTE FRONT CABINET	
1-72	56-43DX0151B010	REMOTE REAR CABINET	
1-73	56-44DX0150B010	REMOTE BATTERY DOOR	
1-74	57-33CD10I00020	REMOTE PLATE	
1-75	61-11DX01500220	REMOTE AGGRAVATE FERRUM 119.5x9x4.5MM	
1-76	61-25DX01500021	BATTERY PLATE (+) R1	
1-77	61-25DX01500121	BATTERY PLATE (-)	
1-78	66-140520170121	SELF-TAPPING SCREW TA/KH 2x7MM	
1-79	05-07CD10I00000	SUB.POWER(AMP) PCB ASSY	
1-80	05-08DX01500000	RCA/D-S JACK PCB ASSY	
1-81	68-112403101000	METAL WASHER 4x10x1MM	
1-82	05-01CD10I00000	MAIN PCB ASSY	
1-83	57-08DX01500020	CD DOOR PVC PLATE	
1-84	58-262972300020	HARD RUBBER FOOT	
1-85	61-11CDX0900020	D.S METAL PLATE	
1-86	61-30CD10I00020	FUNCTION KNOB COVER	
1-87	61-68CD10I00020	CD ALUM COVER	
1-88	61-80DX01500020	FERRUM SHAFT 155x3MM	
1-89	67-021400000020	NUT M4MM	
1-90	66-140230210321	SELF-TAPPING SCREW TA/BH 3x10MM	




## EXPLODED VIEW-1

REF. NO	PARTS NO.	DESCRIPTION	REMARKS
1-91	66-141430212121	SCREW TA/BWH 3x12MM (HEAD 10MM)	
1-92	66-120230160121	MACHINE SCREW MS/BH 3x6MM (BLK)	
1-93	66-120240212121	MACHINE SCREW MS/BH 4x12MM (BLK)	
1-94	66-140230212121	SELF-TAPPING SCREW TA/BH 3x12MM (BLK)	
1-95	66-140230214121	SELF-TAPPING SCREW TA/BH 3x14MM (BLK)	
1-96	66-150230180123	HARDEN SCREW BTTB 3x8MM AB (BLK)	
1-97	66-120526160321	MACHINE SCREW MS/KH 2.6x6MM	
1-98	66-140220210321	SELF-TAPPING SCREW TA/BH 2xX10MM	
1-99	66-140526180311	SELF-TAPPING SCREW TA/KH 2.6x8MM	
1-100	66-120226210321	MACHINE SCREW MS/BH 2.6x10MM	
1-101	66-120320130321	MACHINE SCREW MS/PH 2x3MM	
1-102	66-120330180121	MACHINE SCREW MS/PH 3x8MM (BLK)	
1-103	66-120526160311	MACHINE SCREW MS/KH 2.6x6MM	
1-104	66-140220160321	SELF-TAPPING SCREW TA/BH 2x6MM	
1-105	66-140226180321	SELF-TAPPING SCREW TA/BH 2.6x8MM	
1-106	66-140226210121	SELF-TAPPING SCREW TA/BH 2.6x10MM (BLK)	
1-107	66-140230210121	SELF-TAPPING SCREW TA/BH 3x10MM (BLK)	
1-108	66-140326210321	SELF-TAPPING SCREW TA/PH 2.6x10MM	
1-109	66-140526180121	SELF-TAPPING SCREW TA/KH 2.6x8MM (BLK)	
1-110	66-140526210121	SELF-TAPPING SCREW TA/KH 2.6x10MM (BLK)	
1-111	66-140526210321	SELF-TAPPING SCREW TA/KH 2.6x10MM	
1-112	48-16DX01500221	LED PCB ASSY	
1-113		CLOSE SW PCB ASSY	
1-114		OPEN SW PCB ASSY	

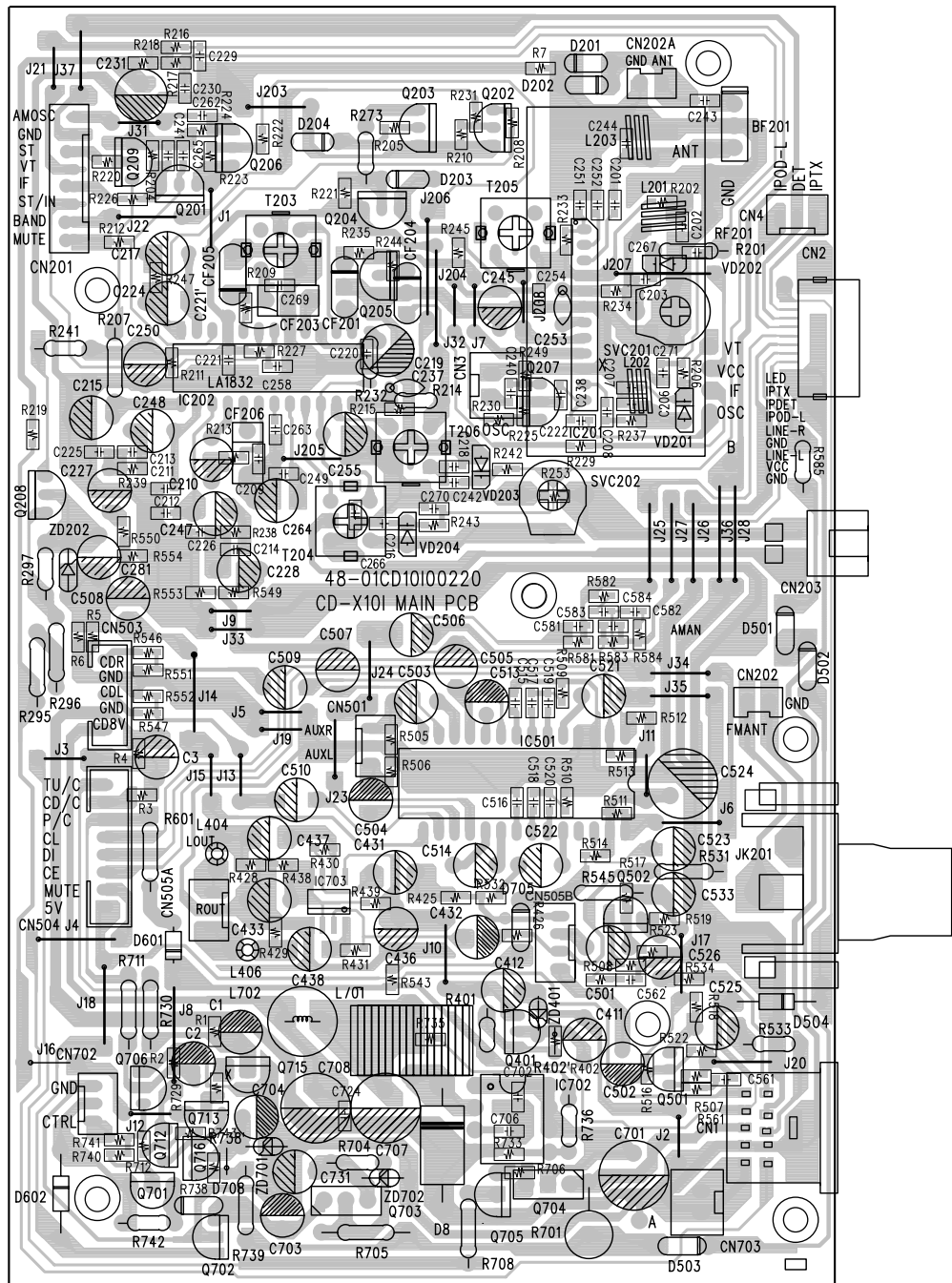
# CD-X10i

## 5 PC BOARDS AND PARTS LIST

### MAIN PCB ASSY

REF. NO	PARTS NO.	DESCRIPTION	REMARKS
	05-01CD10I00000	MAIN PCB ASSY	
	48-01CD10I00220	MAIN PCB	
CF201	31-028107000120	FILTER LT10.7MA5	
CF203	31-026450010110	FILTER SFU450B	
CF205	31-038107020120	FILTER JT10.7MG46-A	
CF206	31-046456000220	RESONATOR ZTB456F15	
CN1	43-462103003320	D-S TERMINAL #DSW-31	
CN2	43-47CD10I00020	18P SOCKET	
CN3,703	43-012250120120	WAFER 2.5MM 2 PIN	
CN4,501,505A, CN702	43-012200130120	WAFER 2MM 3 PIN	
CN201,504	43-012200180120	WAFER 2MM 8 PIN	
CN203	43-022250120221	WAFER 2.5MM 2PIN	
CN503	43-012200150120	WAFER 2MM 5 PIN	
CN505B	43-012200140120	WAFER 2MM 4 PIN	
D8	 12-1N5822000021	RECTIFIER DIODE 1N5822	
D201-204,504,705	12-1N4148000125	DIODE 1N4148	
D501-503,708	12-1N40010000P1	DIODE 1N4001	
IC201	16-TA8176SN0021	IC - TA8176SN	
IC202	16-LA1832000021	IC - LA1832	
IC501	16-LC7534200021	IC - LC75342	
IC702	16-MC34063A0021	IC - MC34063A	
IC703	16-SC1308000021	IC - SC1308-01	
JK201	43-421000003120	COAXIAL JACK IF-01	
L201,203	40-351500135020	FM COIL 5x3.5Tx0.8MM	
L202	40-351500125020	FM COIL 5x2.5Tx0.8MM	
L404,406	38-013100050220	AXIAL INDUCTOR 10UH-EC-36	
L701	38-104230050020	CHOKE COIL 230UH	
L702	38-103200050020	CHOKE COIL 20UH	
Q201,206,207	11-9018F0000021	TR - 9018F	
Q202-204,209,501	11-9014C0000021	TR - 9014C	
Q502,705,706,715			
Q208,401,716	11-8050D0000025	TR - 8050D	
Q701	11-9015C0000021	TR - 9015C	
Q702	16-LM78L05A0021	IC - LM78L05A	
Q703	11-KSD882Y00021	TR - KSD882Y	
Q704	11-KSB772YS0021	TR - KSB772SY	
Q712,713	11-8550D0000025	TR - 8550D	
R241	38-013100050120	AXIAL INDUCTOR 10UH-EC-24	
SVC201,202	27-501802201020	TRIMMER 20PF	
T203	40-02A049004020	IFT 7MM A049 - YELLOW	
T204	40-023120000020	IFT 7MM 312A - BLACK	
T205	40-027400003120	IFT 7MM 740 - ORANGE	
T206	40-02660R002020	IFT 7MM 660R - RED	
VD201,202	12-SVC201SPA021	VARACTOR DIODE SVC201SPA	
VD203,204	12-SVC321SPA021	VARACROR DIODE SVC321SPA	
ZD202	12-011620320125	ZENER DIODE 6.2W 1/2W	
ZD401	12-011470320125	ZENER DIODE 4.7V 1/5W	
ZD701	12-012110320125	ZENER DIODE 11V 1/2W	
ZD702	12-011910320125	ZENER DIODE 9.1V 1/2W	

## MAIN PCB

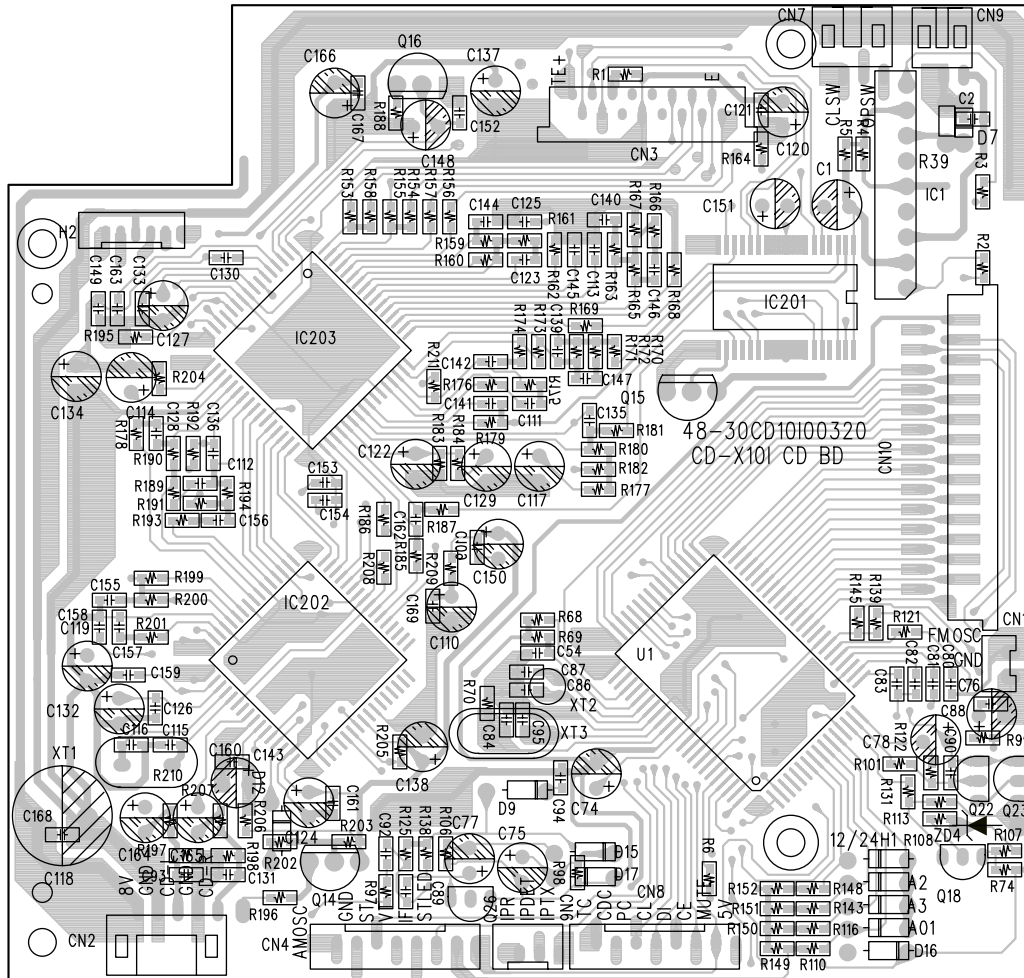


# CD-X10i

## CD PCB ASSY



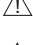




REF. NO	PARTS NO.	DESCRIPTION	REMARKS
	05-30CD10I00000	CD PCB ASSY	
	48-30CD10I00320	CD PCB	
CN3	43-022100216220	F.F.C WAFER 1MM 16 PIN	
CN7	43-022200130120	WAFER 2MM 3 PIN	
CN9	43-022200120120	WAFER 2MM 2 PIN	
CN10	43-022100229120	F.F.C WAFER 1MM 29 PIN	
D7	12-1N5819000021	RECTIFIER DIODE 1N5819	
D9,15-17	12-1N4148000025	DIODE 1N4148	
IC1	16-TA7291S00021	IC - TA7291S	
IC201	16-LA6541000121	IC - LA6541NHL	
IC202	16-LA78603E0021	IC - LC78603E	
IC203	16-LA9242M00021	IC - LA9242M	
H2	43-012150160320	WAFER 1.5MM 6PIN	
Q15	11-2SB764E00021	TR - 2SB764-E	
Q16,18	11-8550C0000025	TR - 8550D	
Q22,23	11-8050D0000025	TR - 8050D	
Q26	11-9014C0000025	TR - 9014C	
U1	16-GY2980000021	IC - GY298	
XT1	31-018169302220	CRYSTAL 16.9344MHZ.	
XT2	31-015320003310	CRYSTAL 32.768KHZ	
XT3	31-017450002010	CRYSTAL 4.500MHZ	
ZD4	12-011270320125	ZENER DIODE 2.7V 1/2W	

## CD PCB



# CD-X10i

## SUBWOOFER POWER PCB ASSY

REF. NO	PARTS NO.	DESCRIPTION	REMARKS
	05-07CD10I00000	SUBWOOFER POWER PCB ASSY	
	48-07DX01500123	SUBWOOFER POWER PCB	
CN1	43-012250130120	WAFER 2.5MM 3 PIN	
CN2	43-012200190120	WAFER 2MM 9 PIN	
CN4	43-012250150120	WAFER 2.5MM 5 PIN	
CN5	43-012250140120	WAFER 2.5MM 4 PIN	
CN6	43-012250120120	WAFER 2.5MM 2 PIN	
C406	 26-017470950111	E.CAP - 4700UF/35V	
C701	 26-017470850121	E.CAP - 4700UF/25V	
C718,719	 26-017100750121	E.CAP - 1000UF/16V	
D401-404	 12-1N5401000021	RECTIFIER DIODE 1N5401	
D701-704	 12-RL2020000021	RECTIFIER DIODE RL-202	
D705,707	12-1N4148000021	DIODE 1N4148	
D706	12-1N4001000021	RECTIFIER DIODE 1N4001	
FU2,3	 46-055350200010	GLASS FUSE 3.5A/125V	
FU4	 46-055400200010	GLASS FUSE T4A/125V	
Q301	11-9014C0000021	TR - 9014C	
Q707,708,710	11-2SD1936T0021	TR - 2SD1936T	
U1	16-TA8216H00021	IC - TA8216H	
U2	16-BA4558N00021	IC - BA4558N	
U3	16-BA5417000021	IC - BA5417	
ZD1,2	12-011910320121	ZENER DIODE 9.1V	

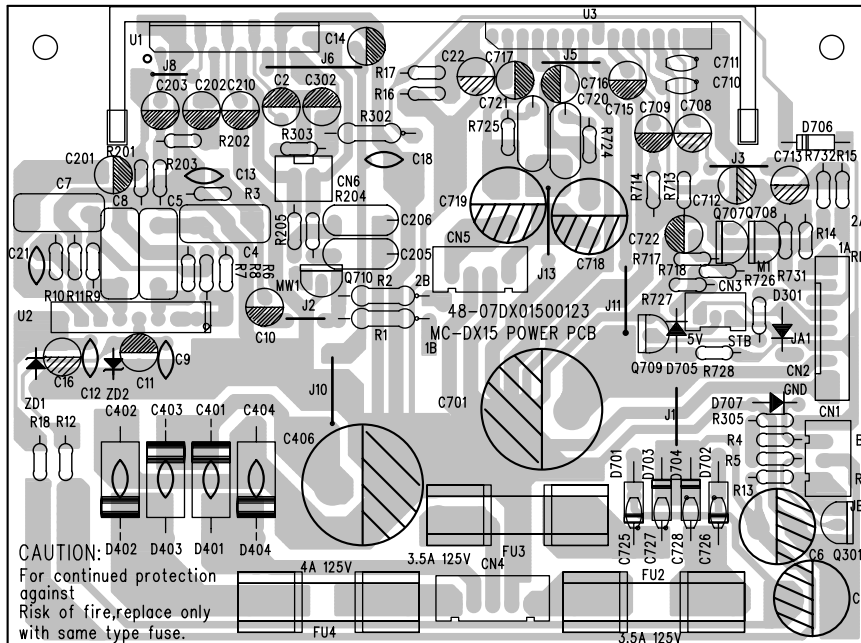
## RCA/D-S JACK PCB ASSY

REF. NO	PARTS NO.	DESCRIPTION	REMARKS
	05-08DX01500000	RCA/D-S JACK PCB ASSY	
	48-08DX01500221	RCA/D-S JACK PCB	
CN801	43-462103003320	D-S TERMINAL #DSW-31	
SPK	43-451200006120	H/RCA JACK 2PIN	

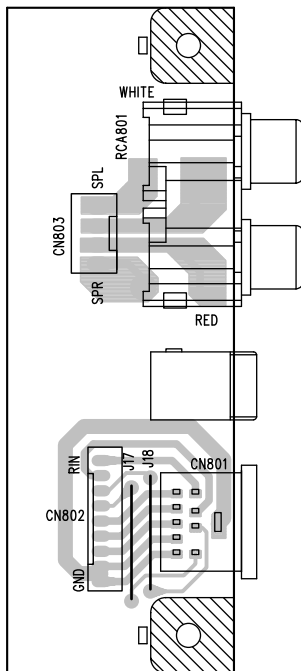
## IPOD PCB ASSY

REF. NO	PARTS NO.	DESCRIPTION	REMARKS
	05-08CD10I00001	IPOD PCB ASSY	
	48-08CD10I00320	IPOD PCB	
COM11	43-011500230930	IPOD SOCKET 30P 0.5MM	
IC1	16-LM324D000021	IC - LM324D	
LED1,2	13-011306622020	LED 3MM (BLUE)	
ZD1	12-011510320125	ZENER DIODE 5.1V 1/2W	

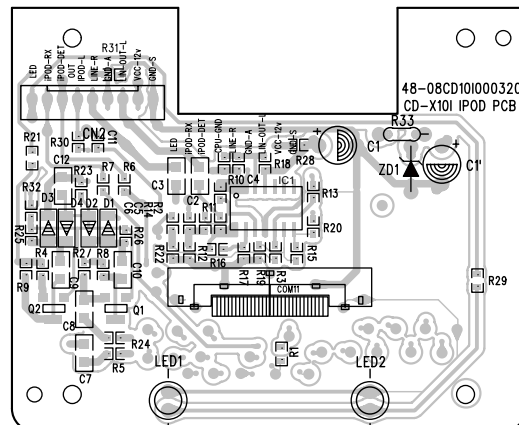
## SUBWOOFER POWER PCB



## RCA/D-S JACK PCB



## IPOD PCB



# CD-X10i

## KEY / DISPLAY PCB ASSY

REF. NO	PARTS NO.	DESCRIPTION	REMARKS
	05-05CD10I00000	KEY/DISPLAY PCB ASSY	
	48-05CD10I00120	KEY/DISPLAY PCB	
LCD	13-05CD10I00120	LCD DISPLAY SDH-DA1241-TP-1	
LED1,4	13-011306622020	LED D3MM - BLUE	
LED2,3	13-011200121020	LED D2X4MM - WHITE	
Q707	11-9015C0000021	TR - 9015C	
REM	17-05FM60380011	OPTIC SENSER FM-6038TM2-5A	
SW1-11	41-150010030020	TACH SW 6x6mm 4 LEGS	

## HP/AUX JACK PCB ASSY

REF. NO	PARTS NO.	DESCRIPTION	REMARKS
	05-09CD10I00000	HP/AUX PCB ASSY	
	48-09CD10I00120	HP/AUX PCB	
AUX	43-431350012020	PHONE JACK D3.5MM #EJ3P008060-13-0	
HEADPHONE	43-431360004020	PHONE JACK D3.6MM TC38-067-05	
L401-403,405	38-013100050220	AXIAL INDUCTOR 10UH	

## OPEN SW PCB ASSY

REF. NO	PARTS NO.	DESCRIPTION	REMARKS
	41-071200010020	OPEN SW PCB ASSY SERIES MICRO SWITCH SD-007A	

## CLOSE SW PCB ASSY

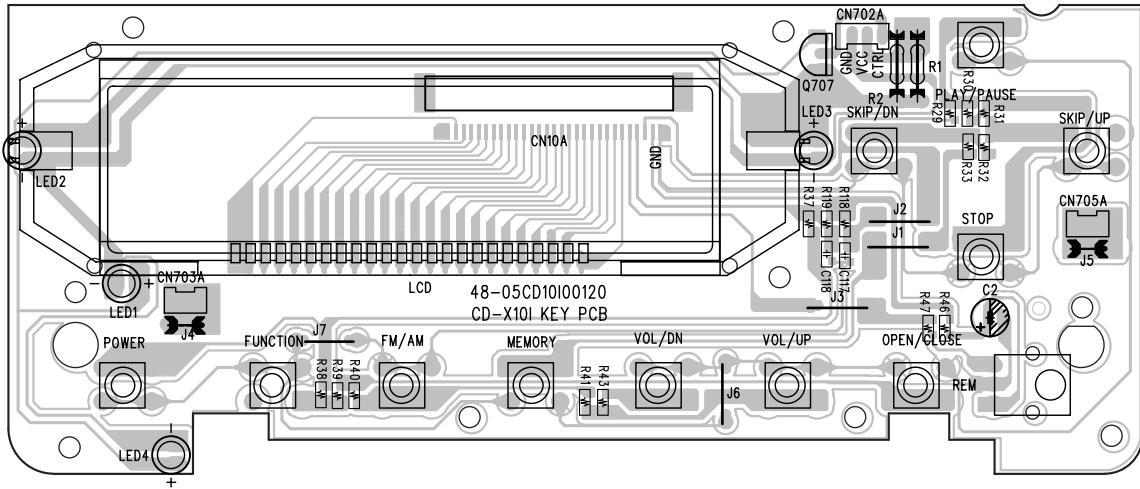
REF. NO	PARTS NO.	DESCRIPTION	REMARKS
	41-071200010020	CLOSE SW PCB ASSY SERIES MICRO SWITCH SD-007A	

## LED PCB ASSY

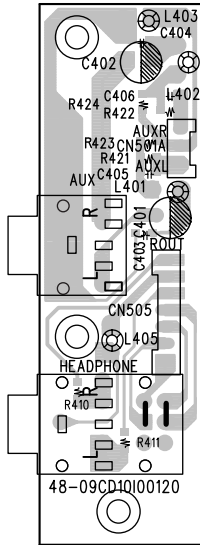
REF. NO	PARTS NO.	DESCRIPTION	REMARKS
	48-16DX01500221	LED PCB ASSY LED PCB	
D1,2	13-011309022020	LED LAMP 3MM - ORANGE/BLUE	



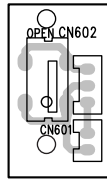
KEY/DISPLAY PCB



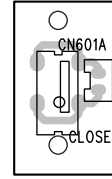
HP/AUX JACK PCB



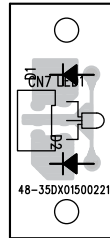
OPEN SW PCB



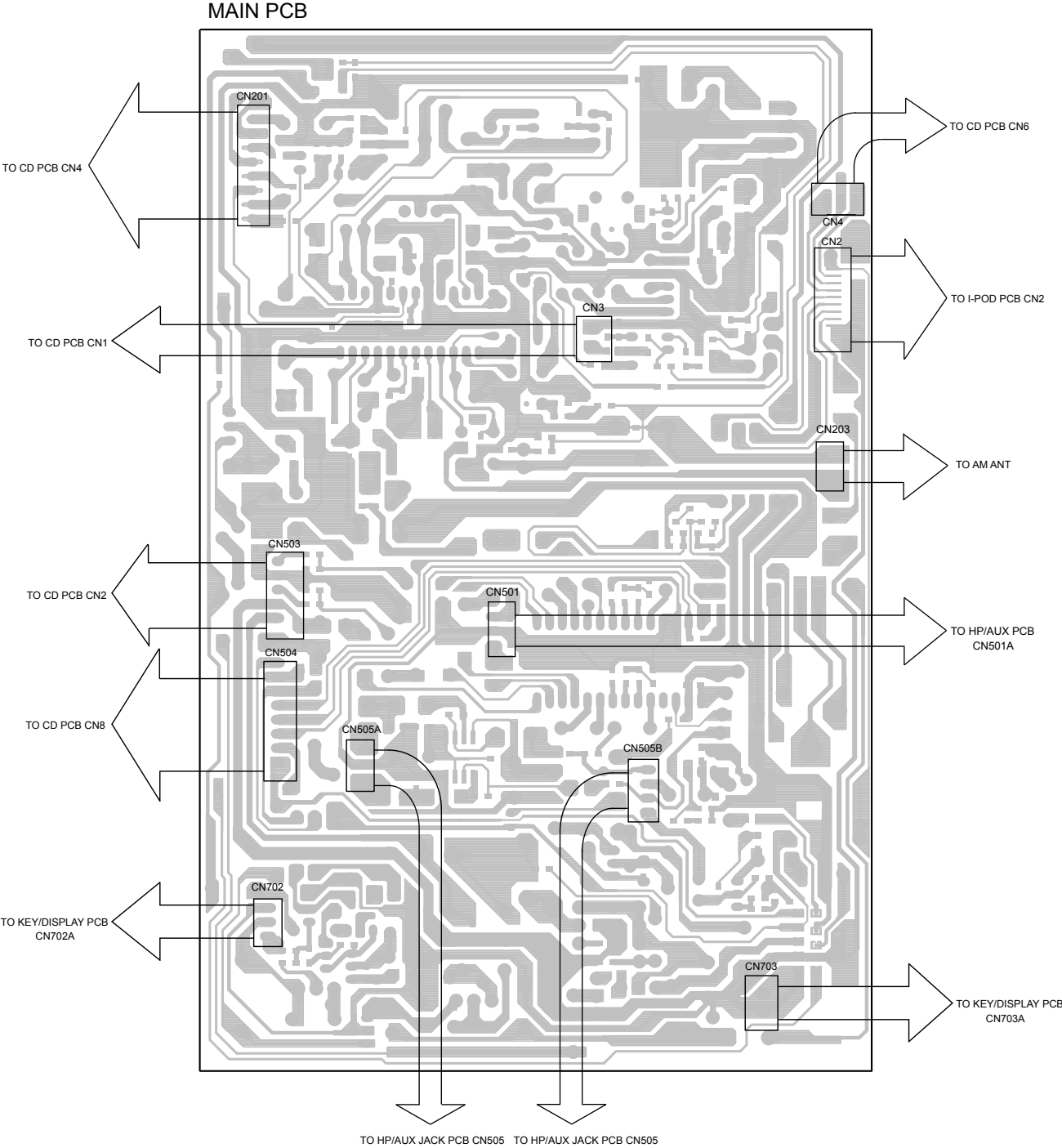
CLOSE SW PCB

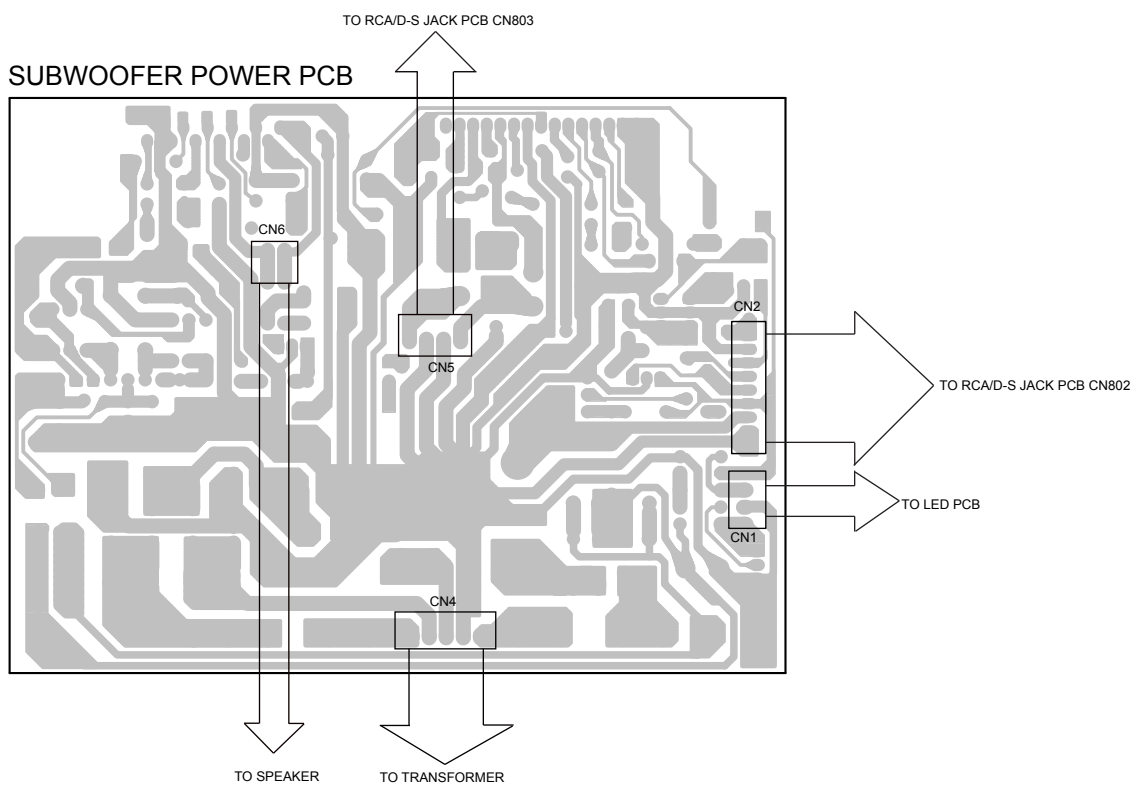
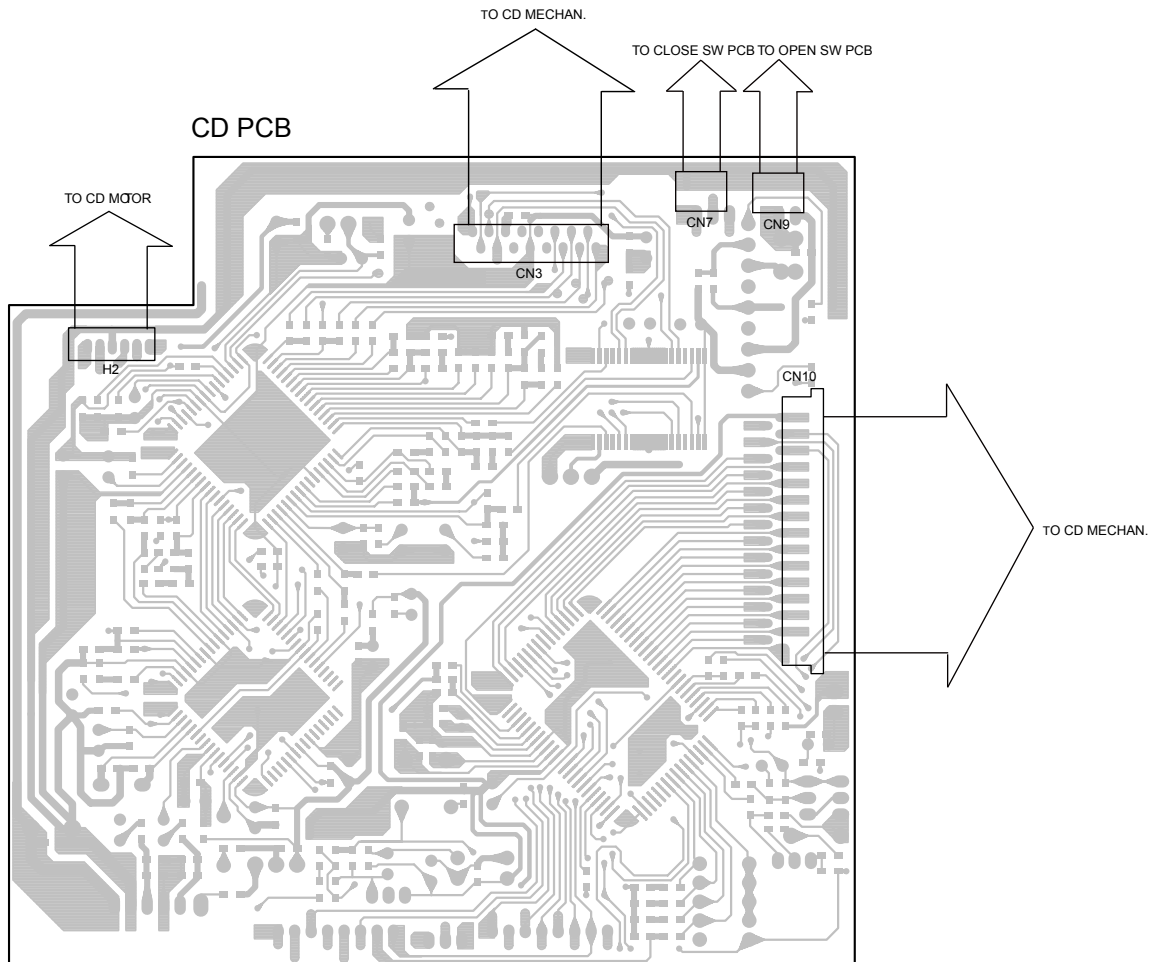


LED PCB



6 WIRING DIAGRAM





# CD-X10i

## 7 INCLUDED ACCESSORIES

### INCLUDED ACCESSORIES

REF. NO	PARTS NO.	DESCRIPTION	REMARKS
	77-20CD10I00020	INSTRUCTION BOOK- E	
	45-194150000020	FM ANT 1.5M - BLACK	
	02-32DX01500000	AM LOOP ANT ASSY	
	45-164300051120	SPEAKER CABLE - WHITE	
	45-164300151120	SPEAKER CABLE - RED	
	45-244300059120	9 PIN S TERMINAL CABLE - BLACK	
	02-17CD10I00000	REMOTE CONTROL - RC-1090	
	51-021301000080	LITHIUM BATTERY CR2032(GP)	
	45-263500000220	CONNECT CORD 3.5 ST/ PLUG CABLE	

# CD-X10i

---

# TEAC

---

---

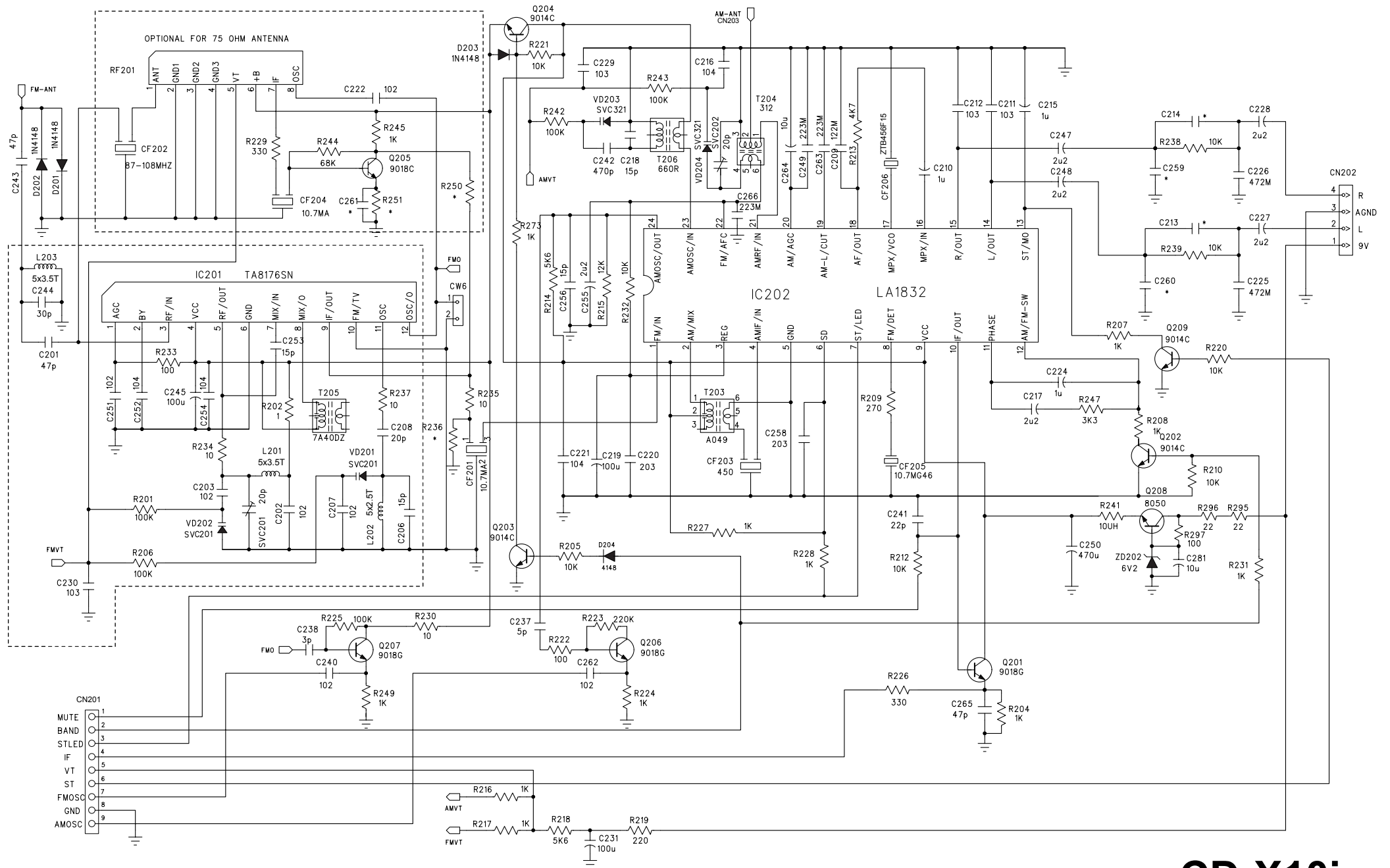
<b>TEAC CORPORATION</b>	3-7-3 Nakacho, Musashino-shi, Tokyo 180-8550, Japan Phone:(0422)52-5081
TEAC AMERICA, INC.	7733 Telegraph Road, Montebello, California 90640 Phone: (323)726-0303
TEAC CANADA LTD.	5939 Wallace Street, Mississauga, Ontario L4Z 1Z8, Canada Phone: (905)-890-8008
TEAC MEXICO, S.A.De C.V.	Campesinos N°184, Colonia. Granjas Esmeralda, Delegacion Iztapalapa, CP 09810, Mexico DF Phone: (525)-581-5500
TEAC UK LIMITED	Unit 19 & 20, The Courtyards, Hatters Lane, Watford, Hertfordshire, WD18 8TE5, U.K. Phone:(0845) 130-2511
TEAC EUROPE GmbH	Bahnstrasse 12, 65205 Wiesbaden-Erbenheim, Germany Phone: 0611-71580
TEAC ITALIANA S.p.A.	Via C, Cantu 9/A, 20092 Cinisello Balsamo, Milano, Italy Phone:02-66010550
TEAC AUSTRALIA PTY., LTD.	280 William Street, Melbourne VIC 3000, Australia Phone:(03)9672-2400
A.B.N. 80 005 408 462	

---

SEP 2006

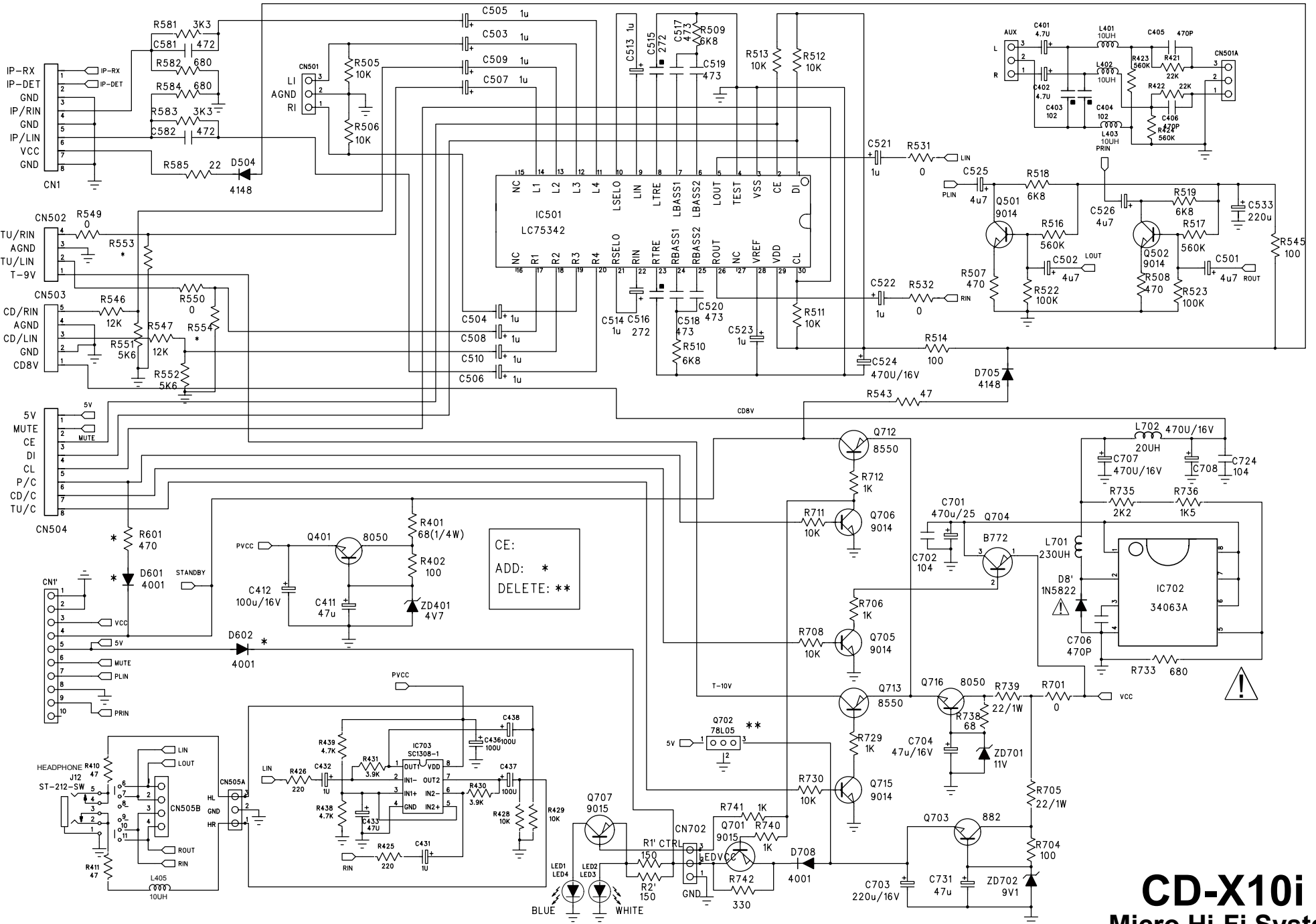
PREPARED IN HONG KONG

# MAIN PCB - 1



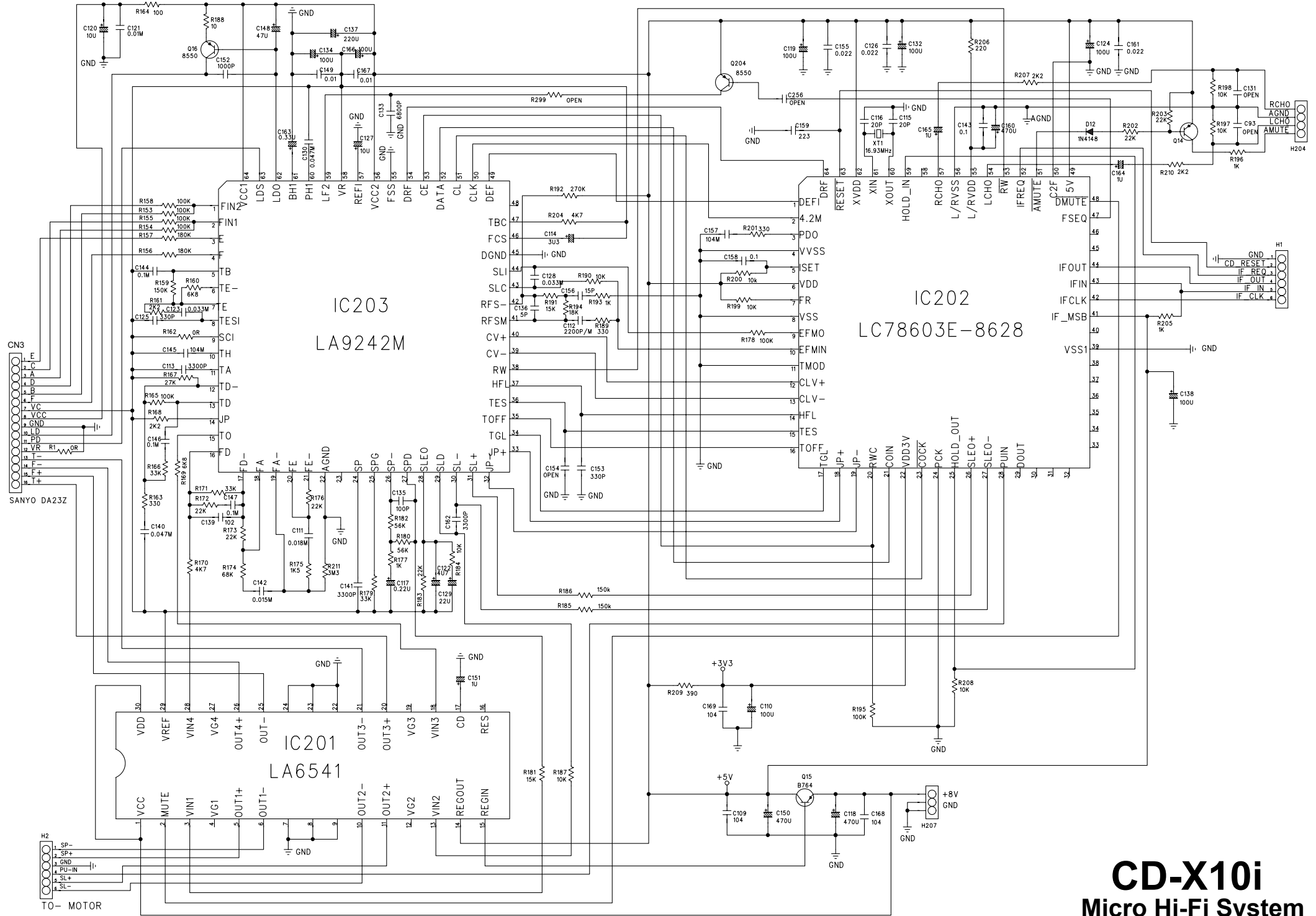
**CD-X10i**  
Micro Hi-Fi System

MAIN PCB - 2



**CD-X10i**  
**Micro Hi-Fi System**

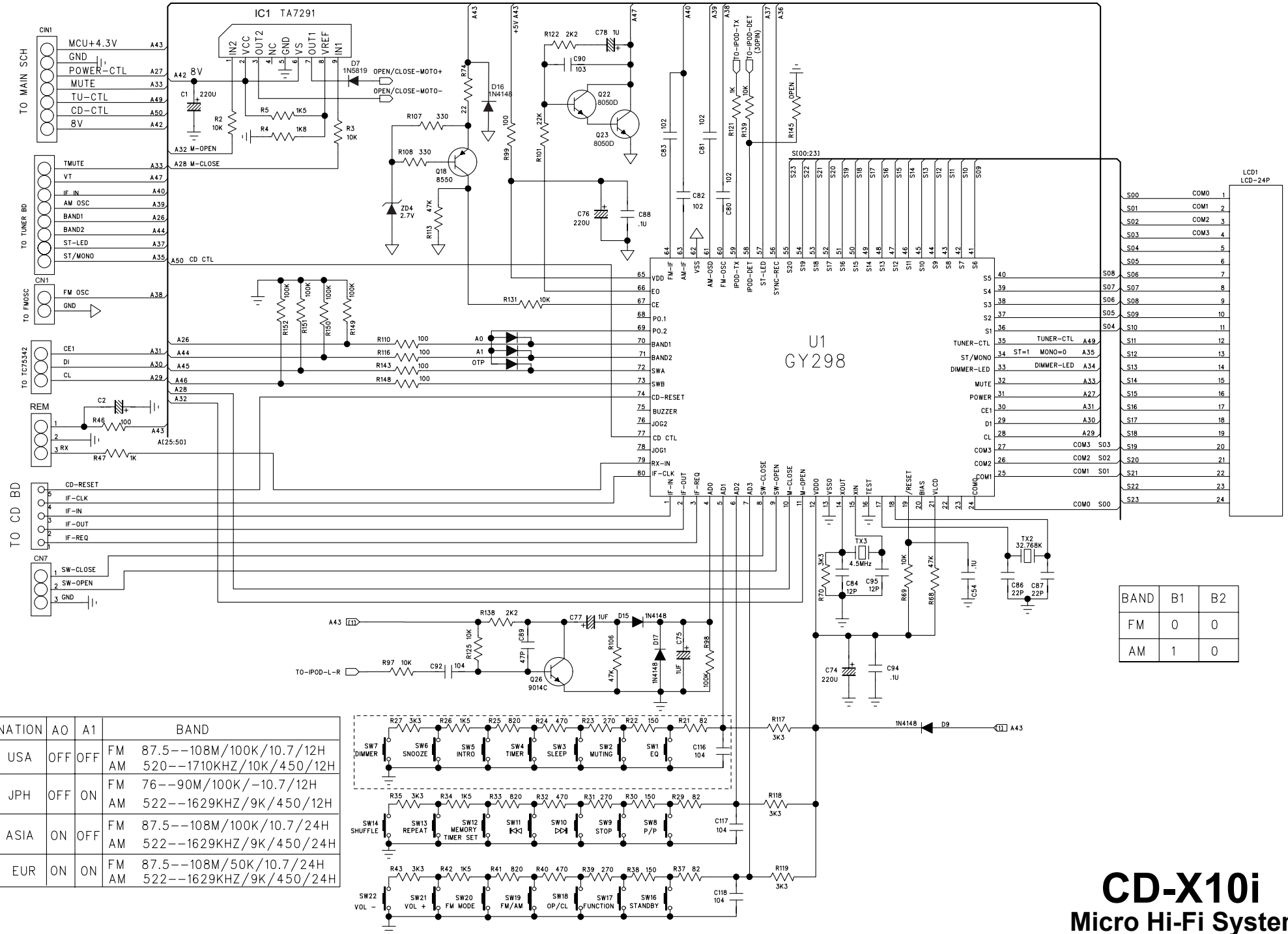
CD PCB



**CD-X10i**  
Micro Hi-Fi System



# CD & KEY/DISPLAY PCB

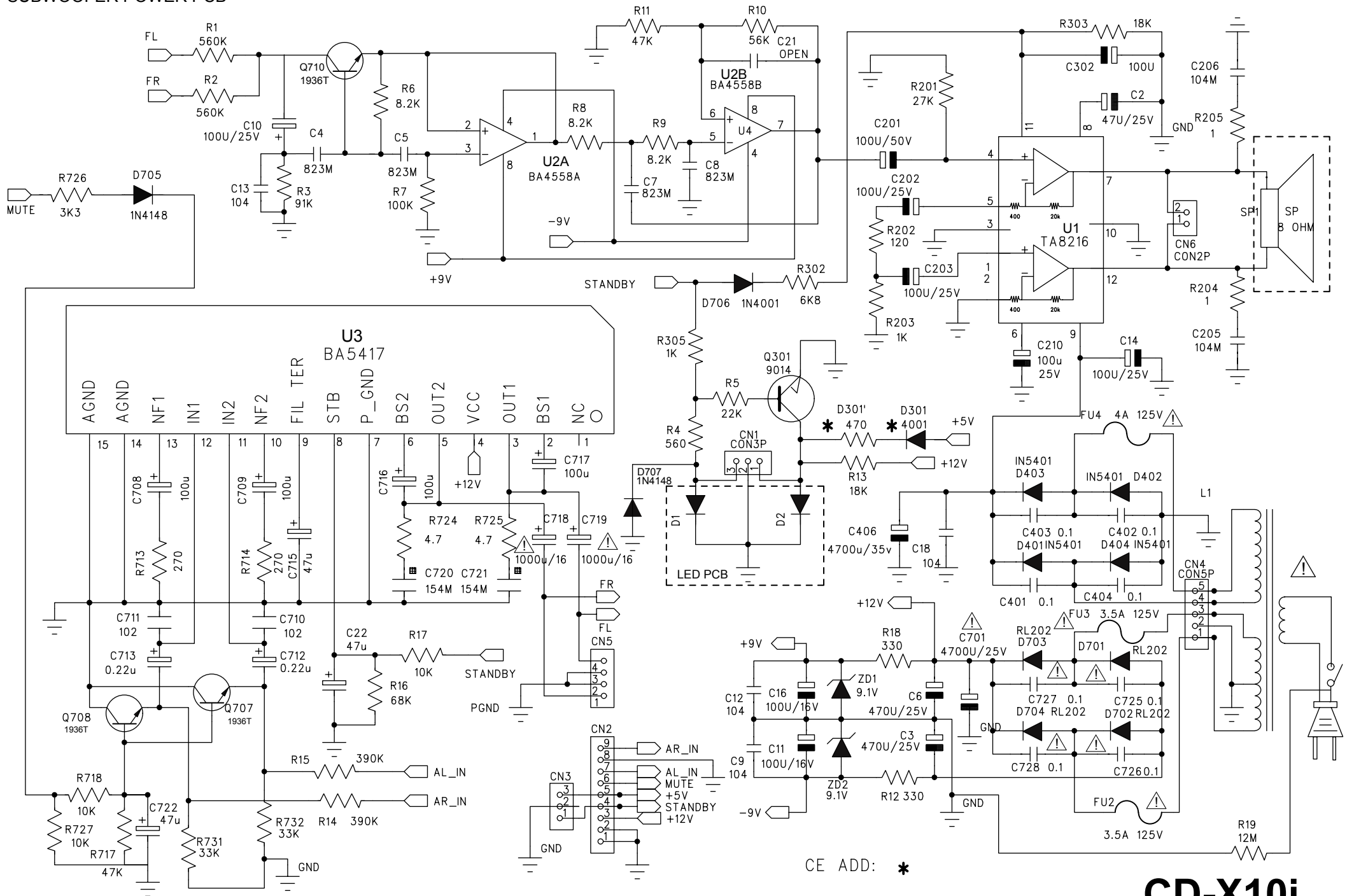


BAND	B1	B2
FM	0	0
AM	1	0

NATION	A0	A1	BAND	
USA	OFF	OFF	FM	87.5--108M/100K/10.7/12H
			AM	520--1710KHZ/10K/450/12H
JPH	OFF	ON	FM	76--90M/100K/-10.7/12H
			AM	522--1629KHZ/9K/450/12H
ASIA	ON	OFF	FM	87.5--108M/100K/10.7/24H
			AM	522--1629KHZ/9K/450/24H
EUR	ON	ON	FM	87.5--108M/50K/10.7/24H
			AM	522--1629KHZ/9K/450/24H

# CD-X10i Micro Hi-Fi System

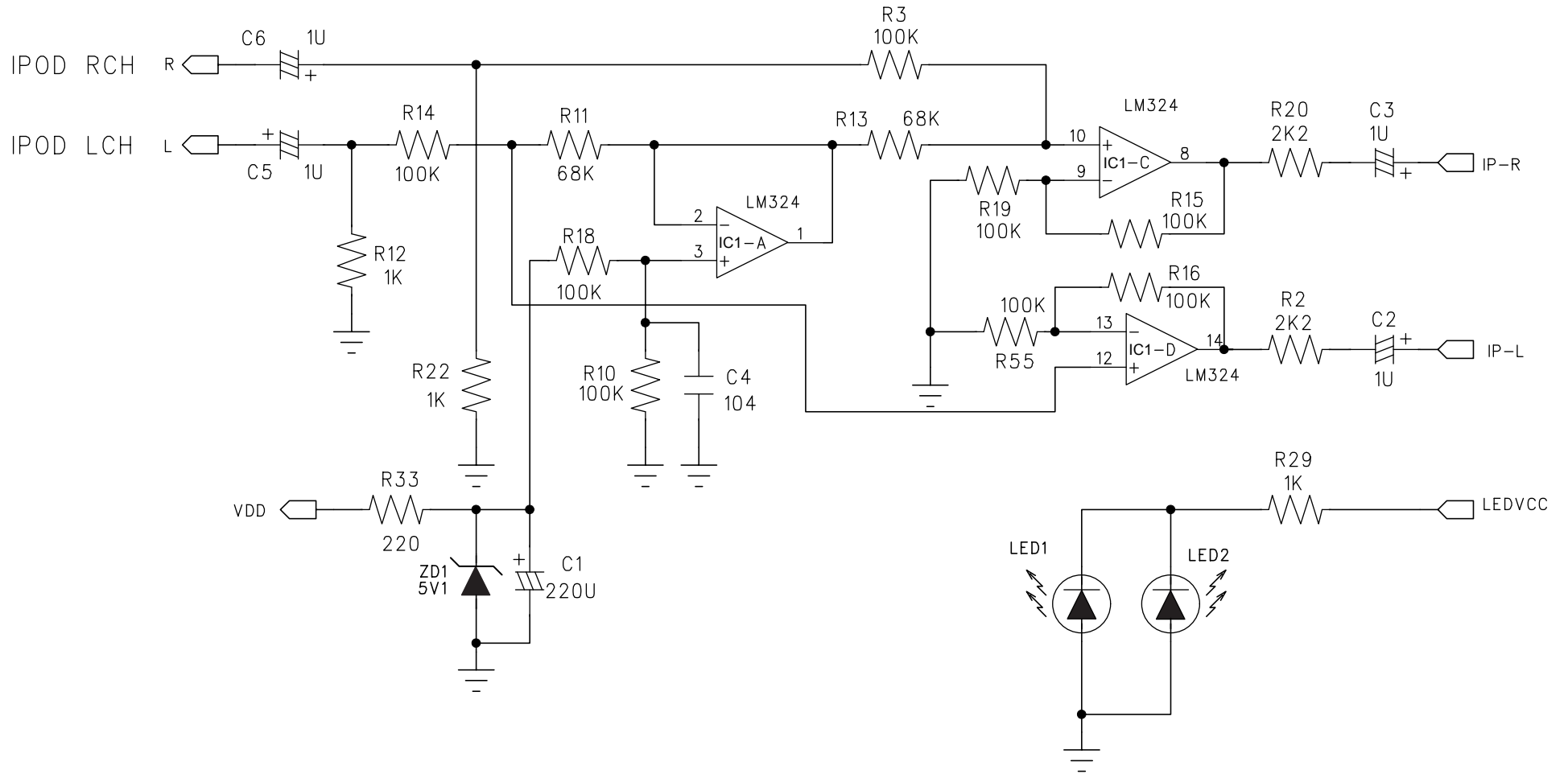
SUBWOOFER POWER PCB



CE ADD: \*

**CD-X10i**  
Micro Hi-Fi System

IPOD PCB



**CD-X10i**  
Micro Hi-Fi System